

DIRECTIONS FOR USE



Please read these instructions completely before using our products. If you have any questions or comments, please contact us. Only apply substances that are recommended by your veterinarian. EARMAXX products should only be used by persons 18 and over. **KEEP AWAY FROM CHILDREN.** Only use clean EARMAXX products on your pet.

- Earmaxx soft syringes & tips can be reused if cleaned properly.
- Use a different syringe and tip for each pet, medication, and/or cleaner.
- Store your pet's medicine as directed on the bottle. Some, but not all liquid medicines need to be kept in a refrigerator; this can also help keep them away from small children.
- Always keep medicines out of the reach of children.
- If you forget to give your pet a dose of medicine, give the dose as soon as you remember, and then go on as before.
- Always follow the printed label on the bottle and use your medicines as directed by your veterinarian.
- Don't give your pets medicines to anyone else to use, even if they have the same symptoms as your pet. They may be harmful to other pets.
- Don't use expired medicine.

USING SYRINGE LIGHTS

- Position the flashlight-to-syringe clip midway on flashlight.
- Twist the end of the flashlight with the lens counterclockwise to turn light on, and focus beam as desired. Twist clockwise to turn light off.
- After filling Soft Syringe to desired level, clip syringe onto light.
- Refer to Fig. 1 for preferred component positioning



USING SOFT SYRINGES

Filling the soft syringe:

- Shake the bottle of medicine.
- Remove the outer lid of the medicine bottle, and pop off drip cap if present
- After reading the prescribed dosage select the appropriate size syringe
- Select appropriate soft syringe tip size. Refer to Fig.3 “Suggested product usage”
- Firmly press the adaptor end of the soft syringe tip onto the end of the syringe
- Push the soft-syringe tip attached to the syringe into the medicine bottle.
- Pull the plunger of the syringe back so that the medicine is drawn from the bottle into the syringe via suction. Pull the plunger back to the point on the scale that corresponds to the dose prescribed for your pet. If you are at all confused about how much medicine to draw into the syringe, ask your veterinarian, or contact Earmaxx.
- Thicker formulas may require that the plunger be removed by pulling it out of the barrel. The thicker formula can then be packed or poured into the barrel of the syringe, up to the desired volume. Replace plunger by pressing it back into the syringe barrel. It is often helpful to puree blend thicker food formulas such as beef for 1-2mins before loading the soft syringe – this also will aid your pet in digesting their food.

Applying Oral Medicine and Formula to Pets:

- When applying oral medicine or formula to your pet, **ALWAYS DISPENSE SLOWLY**, and angle the Soft Syringe tip toward your pets' cheek to prevent choking.
- Discard and replace Soft Syringe tips that show signs of wear from chewing.
- Puree thicker food formulas such as beef for 1-2mins before

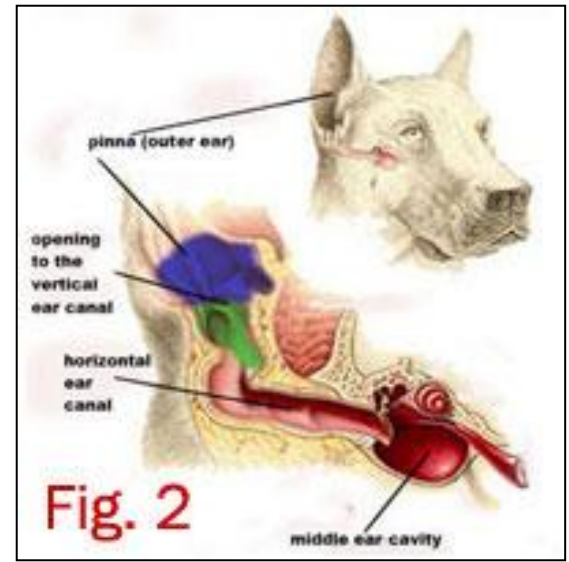
Cleaning and Medicating Pet Ears:

You may need to use one hand to restrain your pet while medicating. Always use the minimum amount of restraint necessary to accomplish this task. Generally, the more you try to restrain your dog, the more they resist. Both you and your pet will be less adverse to medication, if you clean and medicate their ears gently, quickly, and give them a treat when it is over to distract them from any temporary discomfort.

Continued on page 2

1. Cleaning pet ears

- Obtain a good quality ear cleansing solution from your veterinarian.
- Dip the silicone tube of the soft syringe into your ear cleaner bottle, and fill the soft syringe to the desired amount.
- Position the silicone tube just outside of the vertical ear canal, and gently apply cleaning solution.
- For dog ears see Fig. 2. The opening to the vertical canal shown lightly shaded is the target area to deliver medicines and cleaners. Do not insert soft syringe tips or any other foreign material beyond this point without a veterinarians’ supervision
- Gently rub the outside of the ear.
- Refill the soft syringe with room temperature water, and once again position the silicone tube, deliver the water, and massage the outside of the ear to rinse out the cleansing solution.
- Using small cotton wipes- gently wipe the inside of the ear to remove any remaining debris and water.



2. Applying medicine to pet ears

- Gently wipe the outer ear or “pinna” of your dog, to remove excess debris. Small cotton squares work well
- Pre-fill two soft tipped syringes with dosage for each ear
- Insert the silicone tube into the upper portion of the vertical ear canal, and then depress the plunger of the syringe to deliver the desired amount of fluid.

CLEANING EARMAXX PRODUCTS

- Gently unclip or slide the soft syringe from the flashlight.
- Separate the soft syringe tip from the syringe.
Note: this step is not necessary with 60cc Syringes
- Clean all components separately, this can be accomplished by, washing with warm, soapy water, and wiping down tube with alcohol or hydrogen peroxide. Pay particular attention to the end of the silicone tube while cleaning. Dry off syringe and tube.
- Store Earmaxx products in a cool, dry place, away from direct sunlight for best results.

DISCLAIMER: Although EARMAXX products are designed specifically not to cause harm to your pet, improper use of EARMAXX products could conceivably cause harm to you or your pet. Accordingly EARMAXX is not responsible for the consequences to either human or animal, resulting from the misuse or abuse of EARMAXX products.

WARRANTY: Exchange only. Request for exchange must be made within thirty days from date of purchase. Misuse or abuse of any EARMAXX product will void this warranty

Fig. 3

RECOMMENDED USAGE GUIDE			
<i>Syringe size depends on dosage</i>			
	EAR/ NOSE / ORAL LIQUID MEDICATIONS AND CLEANERS	HAND FEEDING LIQUIDS	HAND FEEDING FOOD FORMULAS
SMALL DOGS	2.2mm tip 1cc Clip-on syringe Light	3.2mm tip	Thinner formula 4.9mm tip
			Thicker formula 6.4mm tip with 60cc syringe
MEDIUM DOGS	2.2mm tip 1cc Clip-on syringe Light	4.9mm tip	Thinner formula 4.9mm tip
			Thicker formula 6.4mm tip with 60cc syringe
BIG DOGS	3.2mm tip 1cc Clip-on syringe Light	6.4mm tip	Thinner formula 6.4mm tip
			Thicker formula 7.9mm tip with 60cc syringe
CATS	2.2mm tip 1cc Clip-on syringe Light	3.2mm tip	4.9 mm tip
BIRDS	1.9mm tip - hatchlings 2.2mm tip 1cc Clip-on syringe Light	1.9mm tip-hatchlings 2.2mm tip - small birds 3.2mm tip & 4.9mm tip for larger birds	1.9mm tip-hatchlings 2.2mm tip-small birds 3.2mm tip & 4.9mm tip for larger birds
HORSES	4.9mm tip *consider custom units	6.4mm tip *consider custom units	7.9mm tip with 60cc syringe *consider custom units
REPTILES	*consider custom units	4.9mm tip *consider custom units	7.9mm tip with 60cc syringe *consider custom units
***For any other type of Pet or use, please contact us for custom units			